

FLEX

Industrial Printers for Packaging



PAPER BAGS



FOOD PACKAGING



E-COMMERCE BOXES



SHIPPING BOXES



WOODEN PACKAGING

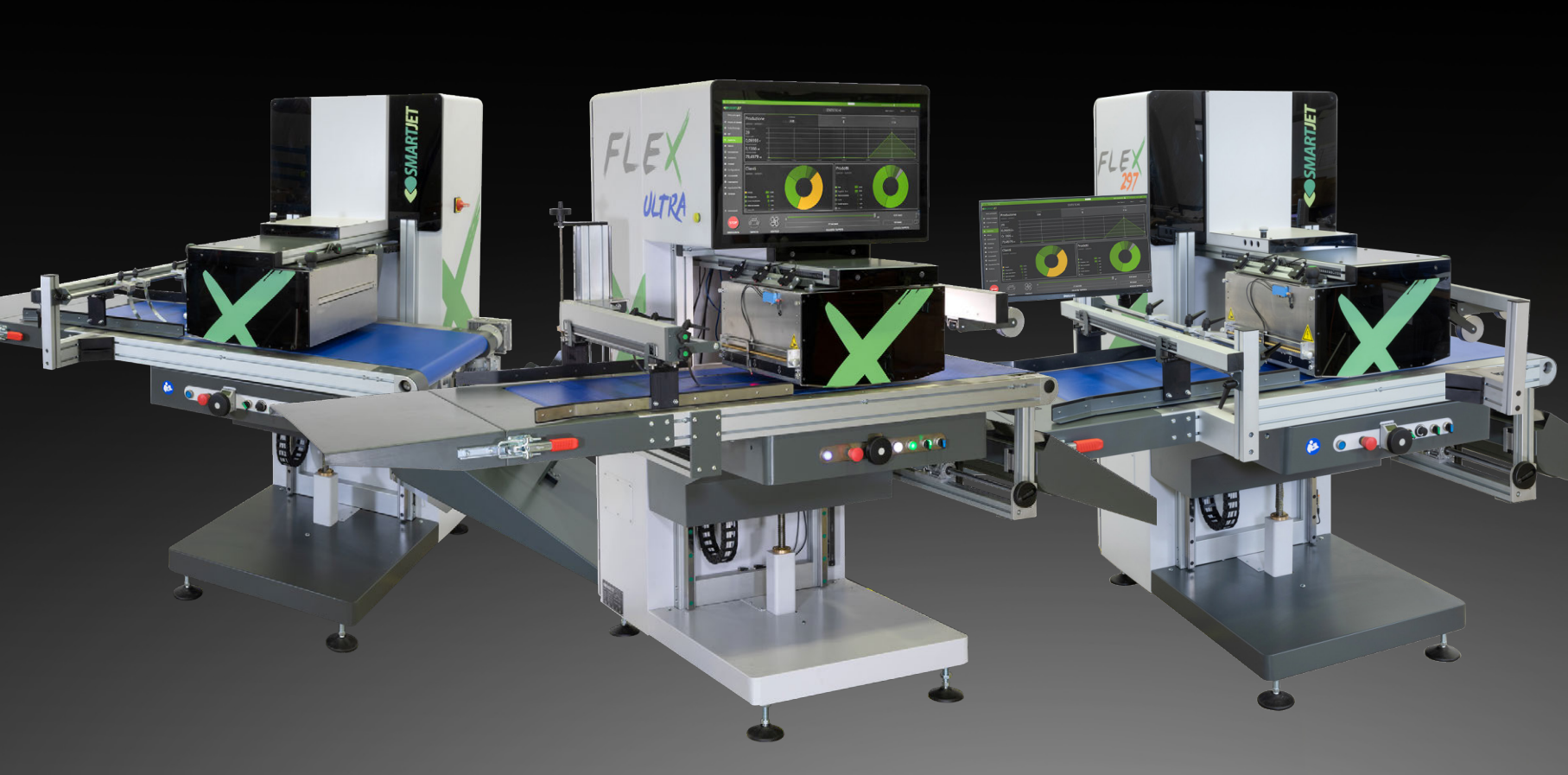


ENVELOPES AND OFFICE SUPPLIES



FLEX Range

Solutions for Printing on Finished Products



The printing line for finished products

The best print quality with maximum productivity

Print Unit

- Speed: up to 46 m/min
- Resolution: up to 1600 dpi
- Aerosol Collection System

HMI

- On-board RIP
- INTEGRA workflow

Transport

- Conveyor belt suitable for indirect food contact
- Conveyor with vacuum system
- Application Thickness: up to 35 cm

End-of-Line Conveyor

- Available with stacker functionality

Feeder

- Application-specific feeders
- Interconnected to the printer

Guides

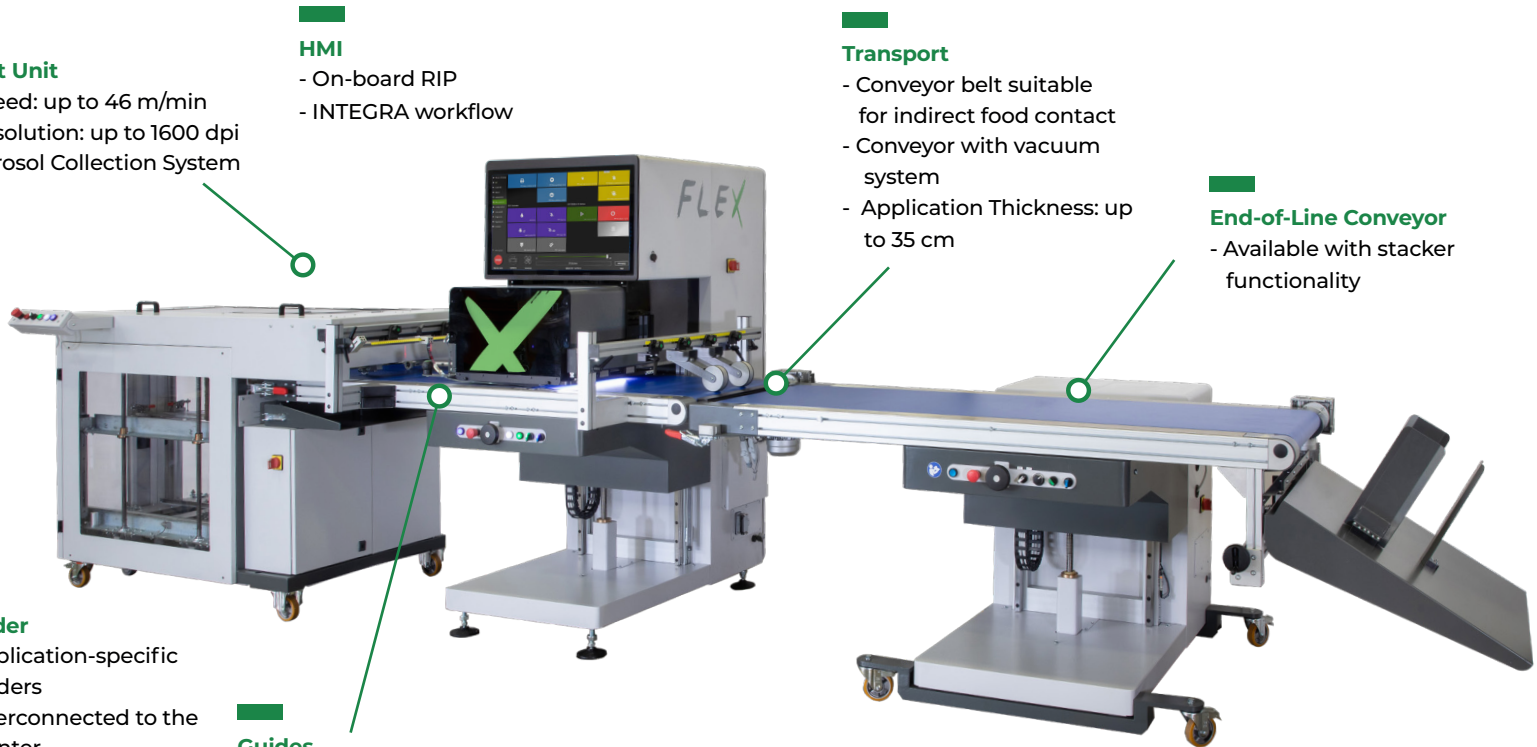
- High-slip guides
- Cantilever or Bridge Architecture
- Laser indicators for quick alignment
- Product always squared off for maximum transport precision

SIEMENS PLC

- Ready for automatic loading and unloading systems

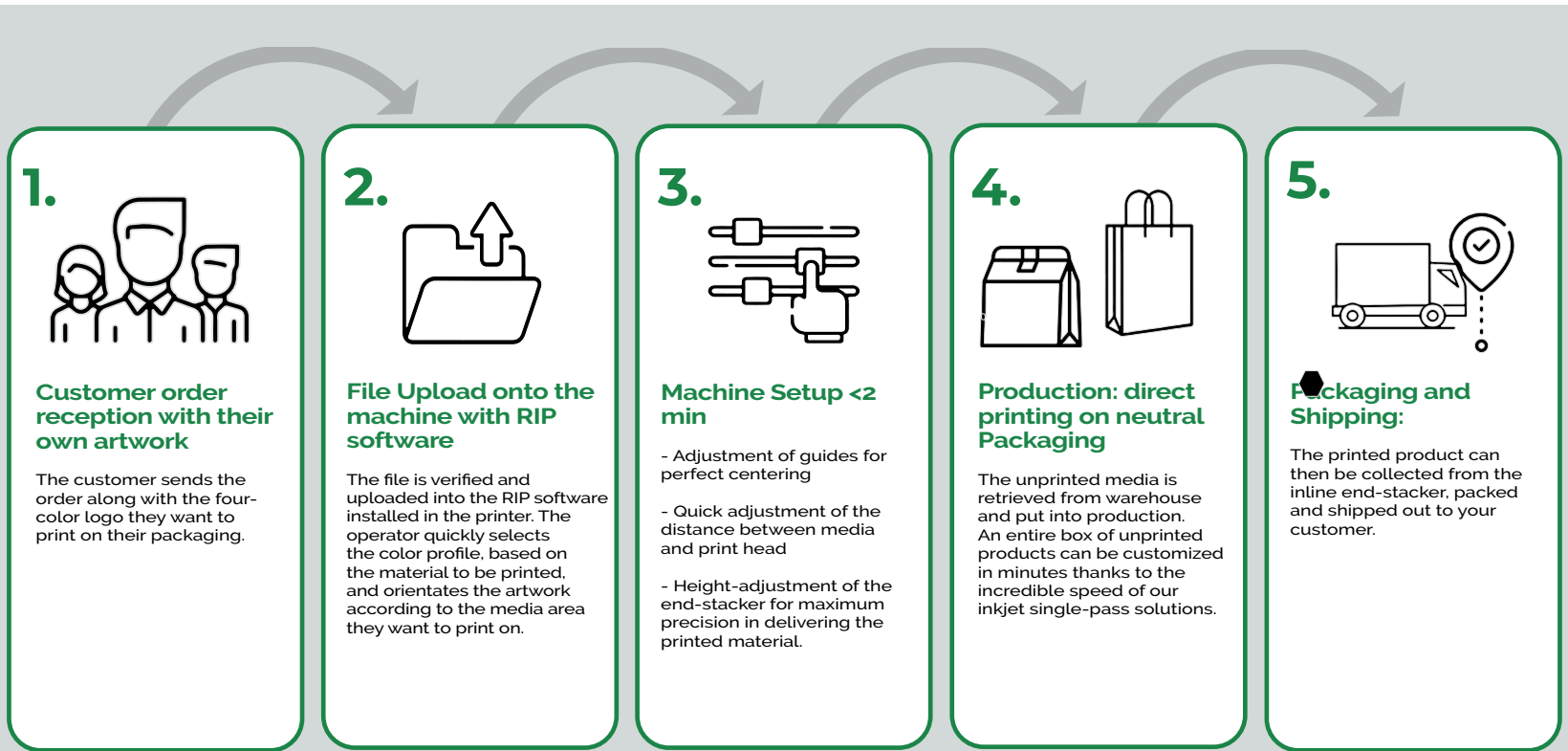
Industrial Architecture

- Maximum structural rigidity for the best print quality



The Process

Customize in Small Batches with Direct Printing on Unprinted Finished Packaging



Why FLEX

1.



Productivity

2.



Print Quality

3.



Versatility

4.



Flexibility

5.



Reliability

6.



Ease of Use and Maintenance

7.



Configurability

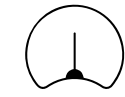
8.



Sustainability

1. Productivity

Build customer loyalty with ultra-fast printing service



**Ultra-fast
delivery**



**Cost-effective
color
printing**



**Extreme
hourly
productivity**

- Print Speed**
up to 46 m/min
- Automatic Loading and Unloading**
Automation
- Changeover in 2 minutes**
No Print Tools
- Unloading Systems**
End-of-line modules

2. Print Quality

Impress with four-color printing even for small batches



Detailed graphics



Vibrant colors



Water and UV resistance

Print Resolution
Up to 1600x1600 dpi

Print Width
297 / 324 mm

Pigmented Inks
Water-Based

CMYK Configuration:
Color Profiles

Print Precision:
Structural Rigidity

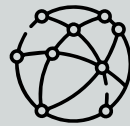
3. Versatility

A single solution for customization in many different markets



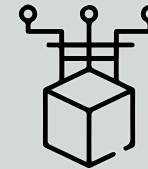
Materials

- Folded cardboard
- Corrugated cardboard
- Wood
- Paper
- Cotton



Markets

- Food Packaging
- Pharmaceutical
- Industrial
- Mailing & Office
- E-Commerce



Applications

- Paper bags
- Wooden crates
- Food Packaging
- Industrial Packaging
- Envelopes
- Cardboard boxes

4. Flexibility

No printing equipment and changeover in < 2 minutes.



No printing equipment



Immediate sampling



Fast time-to-market



Ideal for small batches

No Setup Time
No printing equipment

Changeover in <2 min
quick setup

No Ink Change
Water-based pigmented inks

Print Speed
Up to 46 m/min

***Ideal for Small Runs of Customized Products**

5. Reliability

Designed to ensure maximum consistency and uptime



**Minimal
waste**



**Low
maintenance
costs**



**Maximum
production
uptime**



**Long-term
value**

■ **Official Printheads and Components**
Print unit warranty

■ **Automatic Printhead Cleaning**
Automatic module

■ **Active Protection System**
Print head protection system

■ **Advanced Flattening System**
Ensure maximum application flatness

■ **Aerosol Collection System**
Increase print unit lifespan

6. Ease of Use and Maintenance

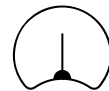
Simple for daily use and intuitive for routine maintenance



Reduced machine downtime



Low maintenance costs



Ultra-fast learning curve

Intuitive HMI
INTEGRA workflow

Easy maintenance procedures
Critical components replaceable by the operator

Remote Assistance
Connected machinery

Complete on-site training
12 hours of installation and training

On-board RIP and Touchscreen
Full operability

7. Configurability

The machine tailored to your printing needs



**Maximum
productivity**



**Operational
efficiency**



**Efficient
investment**

Different machine versions

Full range of solutions

Available add-ons

Expanded functionality

Automatic Loaders

Increased productivity

Delivery Systems

Optimized post-printing
logistics

8. Sustainability

Optimize the environmental impact of your printing even on small runs



**Ideal for printing
on untreated
substrates**



**Ideal for
Sustainable
Packaging**



**Low ink
consumption**

■ **Low ink consumption**
Full range of solutions

■ **Consumption**
<1 kWh: Reduced energy
consumption and cost

■ **No Dryer**
Ultra-fast drying inks

■ **Printing on natural materials**
Ideal for untreated substrates

FLEX ULTRA

Extraordinary operational efficiency



Print Speed
Up to 27 m/min

Resolution
1200dpi

Print Width
297 mm

HMI Touchscreen 32"
INTEGRA PRO



Paper bags



E-commerce boxes



Mailing and office



Food deliver



Shipping boxes




Industrial packaging




Paper




Corrugated cardboard



Flat cardboard

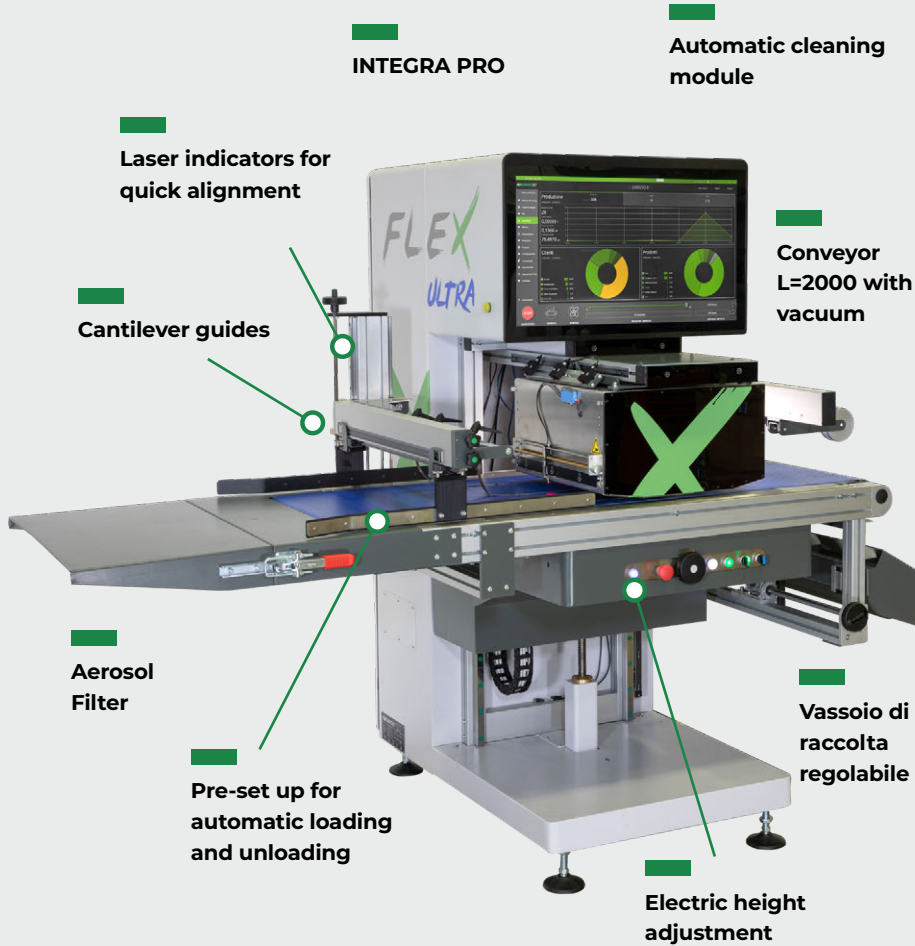


Wood



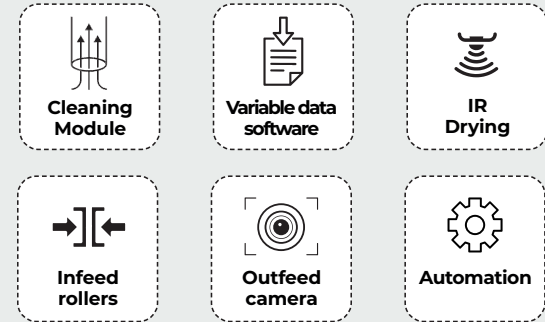
Cotton

FLEX ULTRA - Key Features



Available Upgrades

*Can only be selected during purchasing phase



Technology	Thermal Inkjet
Inks	Water Pigmented Base
Configuration	CMYK
Print Head	HP Pagewidth
Print Width	297mm
Resolution (max)	1200 dpi
Print Speed (max)	27 mt /min
Application Width (max)	>900mm
Application Thickness (max)	350mm
Substrate	Cardboard, Wood, Paper, Cotton

FLEX 297

Your All-in-One Digital Overprinter



Print Speed
Up to 27 m/min

Resolution
1200dpi

Print Width
297 mm

HMI Touchscreen
INTEGRA BASIC and 24" touch




Paper bags



E-commerce boxes



Mailing and office



Food deliver



Shipping boxes



Industrial packaging




Paper



Corrugated cardboard



Flat cardboard

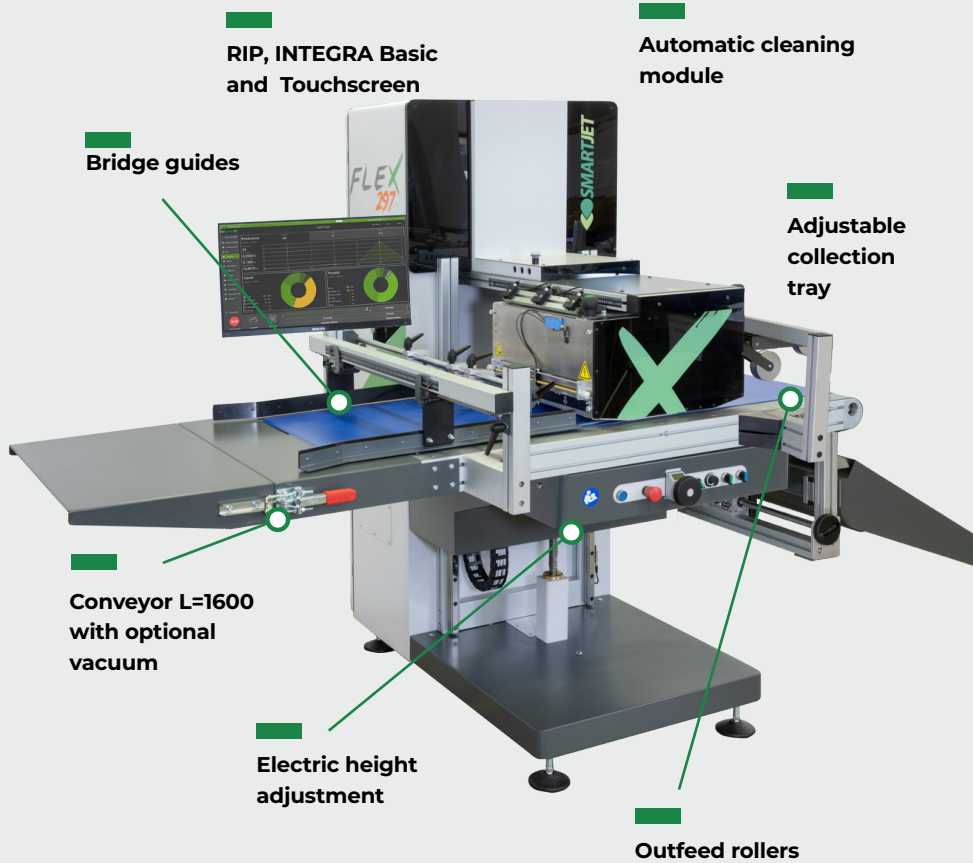


Wood






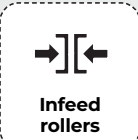


Cotton

FLEX 297 - Key Features



Available Upgrades

*Can only be selected during purchasing phase

 Cleaning Module	 Variable data software	 IR Drying
 Infeed rollers	 Outfeed camera	 INTEGRA PRO

Technology	Thermal Inkjet
Inks	Water Pigmented Base
Configuration	CMYK
Print Head	HP Pagewidth
Print Width	297mm
Resolution (max)	1200 dpi
Print Speed (max)	27 mt /min
Application Width (max)	900mm
Application Thickness (max)	350mm
Substrate	Cardboard, Wood, Paper, Cotton

FLEX ONE

The best industrial overprinter, in its essence



Print Speed
Up to 27 m/min

Resolution
1200dpi

Print With
297 mm

Print DRIVER



Paper bags



E-commerce boxes



Mailing and office



Food deliver



Shipping boxes



Industrial packaging



Paper



Corrugated cardboard



Flat cardboard

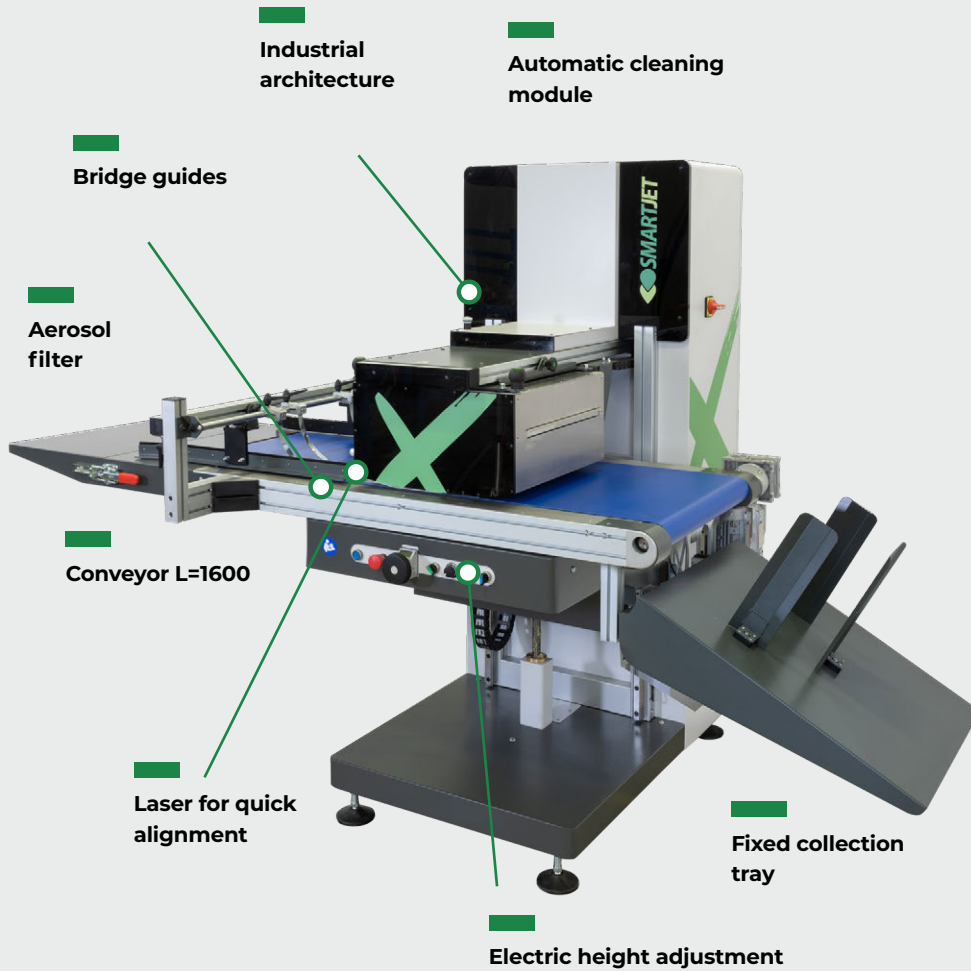


Wood



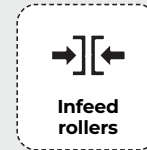
Cotton

FLEX ONE - Key Features



Available Upgrades

*Can only be selected during purchasing phase



Technology	Thermal Inkjet
Inks	Water Pigmented Base
Configuration	CMYK
Print Head	HP Pagewide
Print Width	297mm
Resolution (max)	1200 dpi
Print Speed (max)	27 mt /min
Application Width (max)	900mm
Application Thickness (max)	350mm
Substrate	Cardboard, Wood, Paper, Cotton

INTEGRA

Make use of the full potential of your FLEX



Achieve maximum operational efficiency with **INTEGRA**, the workflow designed to continually enhance your printing process.



Integration with
E-Commerce and ERP



Real-time printing cost
estimation



More efficient
workflow



INTEGRATED
RIP

The Solutions

	INTEGRA BASIC	INTEGRA PRO
WORKFLOW		
Integrated RIP	✓	✓
Worksheet per job	✗	✓
Job archive	✗	✓
Print queue	✗	✓
Interconnectable with automatic	✗	✓
ANALYTICS		
Real-time print cost	✓	✓
Print KPI dashboard	✓	✓
MY SMARTJET		
Statistics monitoring	✓	✓
Alarm notifications via email	✓	✓
INTEGRA Viewer	✓	✓
CONNECTIVITY		
E-commerce integration	✗	✓
ERP integration	✗	✓

Models



ONE

297

ULTRA

Technology	Thermal Inkjet
Inks	Water-based pigmented
Configuration	CMYK
Print Head	HP Pagewidth
Print Width	297mm
Resolution (max)	1200 dpi
Print Speed (max)	27 mt /min
Application Width (max)	≥900mm
Application Thickness (max)	350mm
Substrate	Cardboard, Wood, Paper, Cotton

Available Upgrades

Tailored to your needs



**Cleaning
module**



**Variable data
software**



**INTEGRA
PRO and RIP**



**Infeed press
rollers**



**Outfeed
camera**



**IR
drying**

Automation

Boost Productivity and Operational Efficiency

SJ-500



C-600



VF-280



S-2000

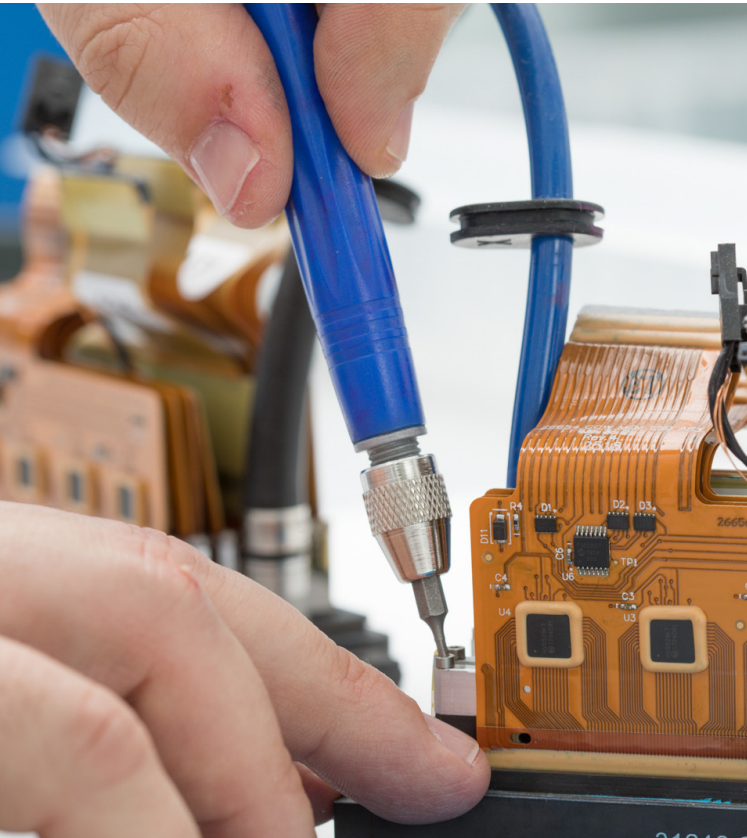


Accessories	Automatic feeder	Automatic feeder	Automatic feeder	Additional conveyor with stacker function
Applications	Paper sheets, die-cut cardboard	Paper sheets, die-cut cardboard	Paper sheets, die-cut cardboard	
Media Dimension	500x800mm	600x900mm	737x711mm	

Our Customer Service

By your side, always.

We provide direct technical support through a dedicated team specialized in single-pass inkjet printing technology.



Remote Support

Our operators are available to assist you remotely on your printer.

On-site Support

With a specialized and dedicated team, we can provide on-site assistance anywhere.

Machine Updates

We support you in keeping your system always efficient with specific machine update kits.

Spare Parts

We provide and guarantee all spare parts for our printing systems.

Consumables

We keep a large stock of all official inks for our systems.

Installation and Training

With every machine purchase, we provide installation and operator training to ensure complete autonomy in the daily management of the system.

Specialists in Single-Pass Inkjet Technology



- We design and manufacture Industrial Digital Printers with single-pass inkjet technology dedicated to packaging decoration.
- We are passionate about technological innovation, and thus, we design each solution by integrating the best available printing technology to provide cutting-edge solutions for each client.



**INDUSTRIAL
SOLUTIONS**



**SPECIALIZED IN
SINGLE-PASS INKJET**



**A TECHNICAL
PARTNER**



**MADE
IN ITALY**

Industrial Printing Solution

We design and manufacture Industrial Digital Printers with single-pass inkjet technology dedicated to packaging decoration.

RIGENERA



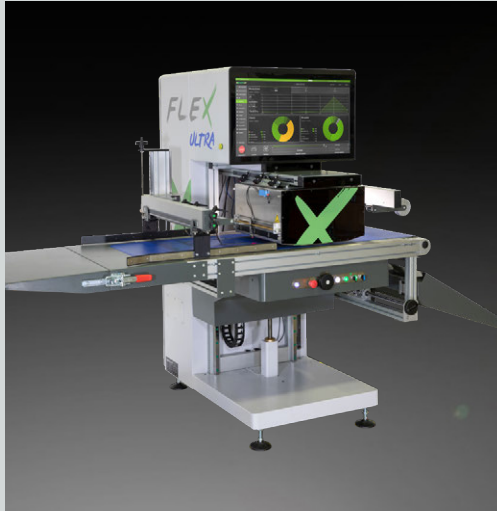
■ The solution for cleaning piezoelectric print heads for industrial applications.

PERFORMA



■ High-performance industrial printing systems with single-pass inkjet technology.

FLEX



■ Single-pass inkjet printers dedicated to direct printing on packaging.

Contact Us

Contact Us

Would you like more information?
Contact us at any time.

Email
sales@smartjet.it

Website
www.smartjet.it

Address
Via Enrico Mattei 30 Fiorano (MO)

Phone
+39 0536 079001

PERFORMA

FLEX

RIGENERA
CLEANING & TESTING SYSTEM **+**



SMARTJET s.r.l.

Via Enrico Mattei 30,
41042 Fiorano Modenese (MO)
Italy



www.smartjet.it



The data, characteristics and photos shown are not binding.
SMARTJET reserves the right to make any changes without notice.
Print 2024