

5000U



Crafted for Creators Who Inspire

Turn vision into masterpieces with lasting impact



B2 Size 50 x 70 cm Print Area

Create larger designs for big artwork & photo ideas



Faster Printing Speeds

3.6X faster speeds compared to conventional systems



Up to 25 cm Print Height

Perfect to personalize from thin items to gift boxes



Smarter Material Handling

Height gap up to 6 mm, ideal for textured or uneven surfaces.



Enhanced Print Quality

Ultra-high-resolution prints with 1800 DPI precision.



Flat-Rotary Quick Switch

Easily switch to rotary printing, 1.5cm-21.5cm in diameter



3D & ADA Braille Accessibility

Precision-crafted Braille dots & embossed touchable colors



Advanced Varnish Printing

Add depth & premium feel with gloss or matte effect



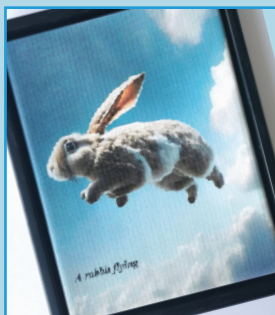
CMYK + WW + VV at One Pass

Enables multi-color and specialty ink printing in a single pass.

APPLICATIONS - FOR EVERY MEMORY, EVERY MOMENT, EVERY MASTERPIECE



360 Rotary Personalization



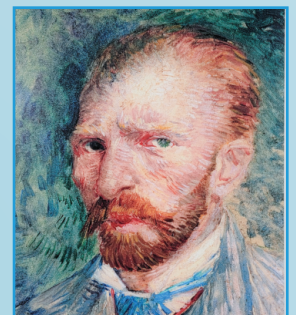
Personalized Gifts



Wedding Invitation Cards



Wedding Gifts



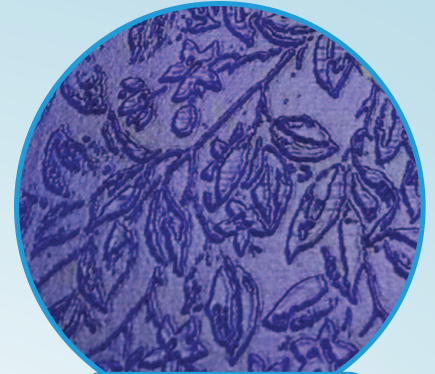
Art, Design & Decor



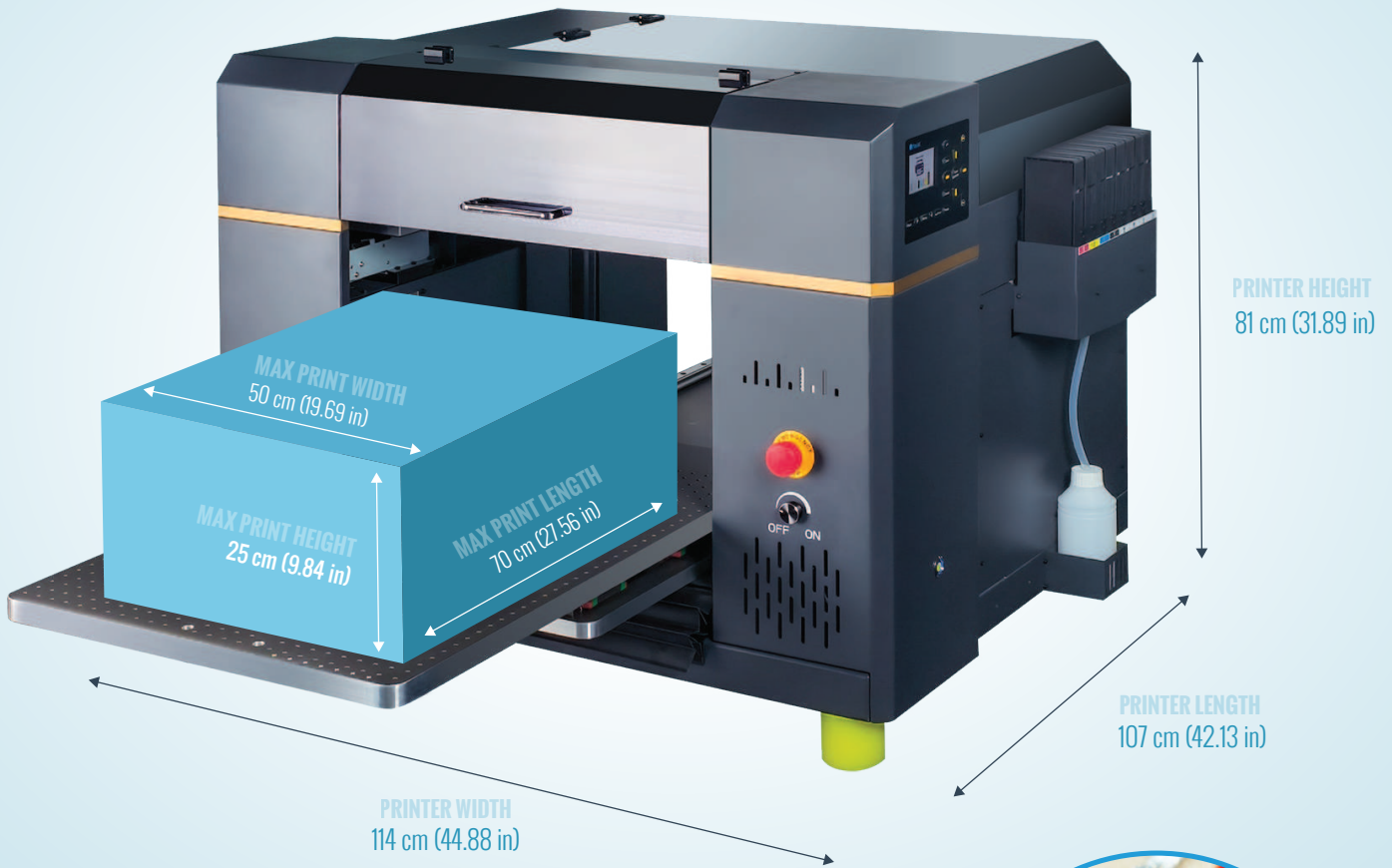
Gold Color



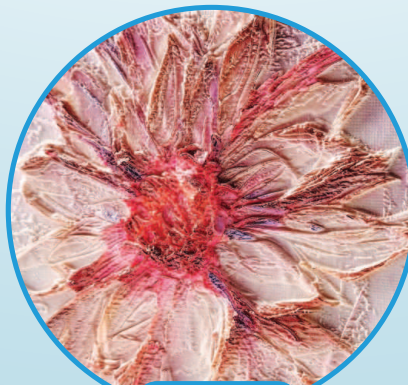
Glossy Varnish



Reverse Varnish



Embossed



Texture



Fine Detail

Ordering Information

Printer name	artis 5000U	
Goods No.	AJB2-3200	
Ink Type	DTS UV LED Curing Vertical Loading Ink Cartridges	
Ink Channels	CMYK+WWWW / CMYK+WW+VV	
230 gr Ink Cartridges	Cyan UV-LED Ink DTSAT3 For Freebird, 230g Magenta UV-LED Ink DTSAT3 For Freebird, 230g Yellow UV-LED Ink DTSAT3 For Freebird, 230g Black UV-LED Ink DTSAT3 For Freebird, 230g White UV-LED Ink DTSAT3 For Freebird, 230g	DTSAT3-UV10-C-02 DTSAT3-UV10-M-02 DTSAT3-UV10-Y-02 DTSAT3-UV10-K-02 DTSAT3-UV10-W-02
On Demand Varnish	Varnish UV-LED Ink DTSAT3 For Freebird, 230g	DTSAT3-UV10-V-02
Cleaning agent	500 ml	AJCA-U-500-001
Fixing agent	500 ml	AJCP-U-500-001



Printing Specifications

Supporting Applications	Wall Decor, Wedding venue signage and personalization, gift packaging, custom gifts, art, photography, artists designs, cylindrical items etc.
Compatible Materials	Precise and stable material handling due to vacuum table flexibility, covering diverse substrates, including curved, uneven surfaces, and heat-sensitive substrates: wood, MDF, aluminum, stainless steel, plastic, acrylic, leather, candles, cardboard etc.
Printing Size Area	B2 print area, 500 x 700 mm (19.69 x 27.56 in)
Printing Height	Full Automatic Height Measurement up to 25 cm (9.84 in)
Printing Speed	~8 minutes for Full 50x70CM @ 720x1800 DPI for KCMY bidirectional print mode
Printing Resolution	1800 DPI ultra-high resolution prints
Built-in Printing Technology	UV LED curing technology with Advanced FREEBIRD Print Engine powered by advanced chips and firmware
Flat to 360 Rotary Quick Switch	Industrial-Grade Aviation Connection Port and servo-motor driven ROT 360 system
Rotary Print Diameter	Thinner Section of Rotary Device from 15 mm to 35 mm; Wider Section of Rotary Device from 35 mm to 215 mm
Print Head	Epson i3200 piezo electric printhead. Made in Japan
Clean Print Module (Optional)	Increase material preparation efficiency by 85%, especially effective in winter and dry weather condition

Printer Specifications

Nozzles	8 Chambers; 360*8 nozzles
Interface Connectivity	USB 2.0 / 3.0
Operating System	Windows®
Printer Dimensions (D*W*H)	Printer 1140 x 1070 x 810 mm (44.88 x 42.13 x 31.89 in); Shipping 1180 x 1140 x 940 mm (46.46 x 44.88x 37.4 in)
Printer Weight	Printer 190 Kg, Shipping 240 Kg
Available Systems	White Ink Circulation, Intelligent Air UV Cooling System, Magnetic Encoding, Intelligent Ink Cleaning Estimation, Vacuum Table with Flexible Zones, Auto-Height Measurement with Advanced Precision Sensors
Content of the Box	artis 5000U, USB cable, Power cable, user manual book, spare parts package, SCM Cable, RIP Software, Extra back-up Damper
Environmental Ranges	50°F to 95°F (10°C to 35°C)
Power Input	A110-220V, 50 Hz-60 Hz max 3.0A
Global Compliance	CE / FCC / RoHS / REACH / HC / RCM / FDA / UL / RISC / CCC / BIS / UKCA certified
Warranty	2 years

Software

artisRIP V9.0	Layout editing platform, resize, mirror, text, color adjustment, color gamut check; Raster and vector images support; Built in customizable card print templates; Previewing and smart nesting.
artisJet Workstation	<p>Workflow Integration: HOT-FOLDER automation and REAL-TIME monitoring, streamlining production processes & reducing operator workload.</p> <p>Product-based & Effect-based Virtual Printer: Create dedicated virtual printers for specific products and templates or batch production.</p> <p>Open API for Automation: Equipped with an Open API for advanced automation and integration.</p> <p>Preview of Print Effects & Job Identification: Real time preview of the print effects, including color accuracy, ink coverage, & design alignment.</p> <p>Ink Cost Control & Time Management: Real-time estimation of printing costs and prediction of printing time optimizing production planning.</p> <p>Ink Capacity Pre-Estimation: Calculates the remaining ink capacity and estimates whether it is sufficient to complete the current job.</p> <p>One Print Head + One Go = 10 Print Effects: White+Color (2 White channels), White+Color (2 White channels), White+Color Edge Adjusted, White+Color 2 White Layers, CWV, C+V, V+C, CWC, White+Color (Spot Color), WCV (Spot Color)</p> <p>Letter-based Edge Sharpening: Offers adjustable edge sharpening degrees for text and lettering, enhancing clarity and definition.</p> <p>Copies to Print in One Click: Specify the number of copies to print with a single click, streamlining repetitive tasks.</p> <p>Self-Maintenance System: Reduces the need for daily cleaning by automating routine maintenance during idle periods.</p>
3rd Party Software Compatibility	Empowered by HOT FOLDER Technology , artisJet Workstation allows users to print directly from their preferred design software, being fully compatible with a wide range of third party software, including Adobe Illustrator, CorelDRAW, and Adobe Photoshop.

